

City of Arkansas City, Kansas

Stormwater Management Plan



Federal Permit No. KSR044001

Submitted in Compliance with Kansas Permit No. M-AR06-SN01

Date: November 16, 2020

TABLE OF CONTENTS

Section 1	Introduction/Background.....	1-1
	1.1 Introduction.....	1-1
	1.2 Overview of Stormwater Permit Requirements for MS4s.....	1-1
Section 2	Parties Responsible for Compliance with this Plan	2-1
Section 3	Six Minimum Controls.....	3-1
	3.1 Public Education and Outreach.....	3-1
	3.2 Public Involvement and Participation.....	3-3
	3.3 Illicit Discharge Detection and Elimination	3-5
	3.4 Construction Site Stormwater Runoff Control	3-7
	3.5 Post-Construction Stormwater Management in New Development and Redevelopment	3-9
	3.6 Pollution Prevention/Good Housekeeping for Municipal Operations	3-11
Section 4	Total Maximum Daily Load (TMDL) Regulated Pollutants.....	4-1
Section 5	Monitoring	5-1
Section 6	Permit Compliance Schedule and Annual Reporting	6-1
Section 7	Modifications to BMPs or this Plan.....	7-1

Attachments

Map of Permitted Area.....	Attachment 1
TMDL Monitoring Locations.....	Attachment 2

1.1 INTRODUCTION

This document is a Stormwater Management Plan (SMP, or the “Plan”) created to help reduce the discharge of pollutants in stormwater runoff within regulated areas of Arkansas City, Kansas. It outlines stormwater program activities, monitoring requirements, reporting requirements, and responsible parties for implementing this work.

This plan was prepared in compliance with Kansas Permit Number: M-AR06-SN01

Effective Date: November 16, 2020

Expiration Date: November 15, 2024

Section 1.2 summarizes the basic requirements of the stormwater permitting program for the benefit of users of this document. Subsequent sections provide the details of the SMP itself.

1.2 OVERVIEW OF STORMWATER PERMIT REQUIREMENTS FOR MS4s

The Federal Water Pollution Control Act (also referred to as the Clean Water Act) requires permits of both municipal and industrial stormwater dischargers, developed under a program called the National Pollutant Discharge Elimination System (NPDES). Permits for stormwater discharges from municipal urbanized areas are regulated under the MS4 permitting program. The term MS4 is short for Municipal Separate Storm Sewer Systems. (These are urbanized areas that have stormwater drainage systems that are separate from sanitary sewer systems.)

The Kansas Department of Health and Environment (KDHE) have developed two general MS4 permits for small municipalities with separate storm sewer systems. One was written for entities receiving an MS4 permit for the first time and another written for entities receiving a re-issued permit.

The general permits establish standardized requirements for entities across the state engaged in similar activities and discharging stormwater of similar quality. Permits issued to regulated cities or counties may include added conditions in addition to the standardized requirements in the general permits. The following description of the MS4 permit program was compiled from KDHE fact sheets:

The small MS4 general permit program addresses MS4s that generally serve populations less than 100,000 in urbanized areas, plus those MS4s located outside of urbanized areas that have or may have the potential to negatively impact surface water quality as a result of their discharges.

A general permit requires the permittee to develop, implement, and enforce a Stormwater Management Plan (SMP) designed to reduce the discharge of pollutants from the MS4 to the maximum extent practical, to protect water quality, and to satisfy water quality requirements of the Clean Water Act and Kansas law.

The SMP must include six minimum stormwater control measures that are required of all plans. It is also required to address implementation of Best Management Practices (BMPs) for reducing pollutants in stormwater discharges from the municipality. Special emphasis is placed on drainage basins and stormwater pollutants that discharge to designated Total Maximum Daily Load (TMDL) streams and lakes within or immediately downstream of the municipality.

The SMP document must address the BMPs to be implemented by the permittee, provide measurable goals for the BMPs, designate the parties responsible for implementing the control

measures, provide appropriate maps and conduct stormwater/receiving stream sampling and testing based upon the TMDL impairments.

“Impaired Waters” are streams or lakes that do not attain or maintain minimum water quality standards. They may result from individual or multiple pollutants. As noted above, TMDL is an acronym for **T**otal **M**aximum **D**aily **L**oad, which is a calculation of the maximum amount of a pollutant that a waterbody can receive and still meet water quality standards. Impaired streams and lakes are also commonly referred to as TMDL water bodies.

TMDL water bodies and pollutants of concern are identified in permits issued for individual municipalities if impaired waters exist within or immediately downstream of that jurisdiction. Monitoring requirements and water quality protection initiatives may then focus especially on those pollutants.

SECTION TWO

Parties Responsible For Compliance With This Plan

Overall responsibility for coordination of activities outlined in this Plan, and for reporting will be by the City of Arkansas City Management Assistant.

This section describes the six minimum water quality protection control measures that are required by all MS4 permits. They include the following:

1. Public Education and Outreach
2. Public Involvement and Participation
3. Illicit Discharge Detection and Elimination
4. Construction Site Stormwater Runoff Control
5. Post-Construction Stormwater Management in New Development and Redevelopment
6. Pollution Prevention/Good Housekeeping for Municipal Operations

For each of these control measures the following is provided in this section:

- A summary description of the control measure
- The benefits of the control measure
- A table listing Best Management Practices (BMPs), Measurable goals for the BMPs, and Responsible parties
- Program assessment activities for evaluating the success of the control measure

3.1 CONTROL MEASURE 1 - PUBLIC EDUCATION AND OUTREACH

Description

This minimum control consists of implementing a public education program to inform individuals, businesses, and organizations about the impacts of stormwater discharges on surface water quality and how they can help reduce pollutants in stormwater runoff. This may include distribution of educational materials to the community and/or conducting outreach activities. The implementation of BMPs for this minimum control measure must result in accumulation of a minimum of 4 total points on an annual basis for each calendar year 2021 and 2022. The Points total requirement increases to 7 points for each calendar year beginning in 2023.

Benefit

An informed public increases awareness of water quality issues in both residents and businesses, creates opportunities for the public to take direct action to improve the health and sustainability of their community, and builds support for program goals making initiatives more effective.

SECTION THREE

Six Minimum Control Measures

BMPs, Goals, and Staff

Public Education and Outreach					2021	2022	2023	2024
BMP ID Number	BMP Description	Measurable Goal	Lead Staff	Schedule	4 Points Each Year		7 Points Each Year	
1.01	Maintain a stormwater webpage for the permittee.	Maintain the webpage with up to date information will all links effective and valid information. Document monthly checks in log book.	Public Services and Public Information Officer	Website must be available throughout the year once posted.	3	2	2	2
1.04	Apply notification placards on stormwater inlets "No Dumping – Drains to River" message.	Apply this notification on at least 10% of all known stormwater inlets in the MS4 permit area.	Public Services	Required number must be placed in year points claimed. Subsequent years 5%.	2	2	2	2
1.05	Post the municipality's MS4 permit and SMP document on the stormwater webpage.	Documents must be posted for at least six months of the year to claim one point.	Public Information Officer	Months for which the posting occurs must be within year points claimed. No carryover to next year.	1	1	1	1
1.06	Provide either a stormwater telephone hotline or web based or text method for public reporting of illicit discharges.	Respond within 10 days and if found valid resolve within 20 days or set up schedule by then.	Neighborhood Services and Public Information Officer	Hotline / reporting system must be available for at least six months in year to claim points.	2	2	2	2
TOTAL					8	7	7	7

Program Assessment

The overall success of the Public Education and Outreach Program will be measured through the successful implementation of the components of the program. Program assessment will be reported with each annual NPDES report discussing the activities completed in this section for the previous program year.

SECTION THREE

Six Minimum Control Measures

3.2 CONTROL MEASURE 2 - PUBLIC INVOLVEMENT AND PARTICIPATION

Description

This minimum control consists of creating opportunities for individuals and organizations to provide public comment and recommendations regarding BMPs and measurable goals, and participate in the development and implementation of BMPs to reduce the contamination of stormwater. This program must also comply with state and local public notice requirements. The implementation of BMPs for this minimum control measure must result in accumulation of a minimum of 3 total points on an annual basis for each calendar year 2021 and 2022. The Points total requirement increases to 6 points for each calendar year beginning in 2023.

Benefit

The goal of the stormwater management plan is to improve water quality in local lakes and rivers, which provides benefits to the entire community. As such, the community deserves to have an opportunity to voice opinions on the content of the plan. Further, input into decisions builds support for and ownership in outcomes.

BMPs, Goals, and Staff

Public Involvement and Participation					2021	2022	2023	2024
BMP ID Number	BMP Description	Measurable Goal	Lead Staff	Schedule	3 Points Each Year		6 Points Each Year	
2.03	Hold park or stream bank clean-up events for public volunteers to aid municipal staff in removing trash, debris, or pollutant sources from clean-up area.	Clean an area which must be equal to or greater than one acre or alternately at least 200 yards of stream bank.	Public Services and Public Information Officer	At least one such clean-up activity must occur in the year for point to be claimed.	3	3	3	3
2.05	Provide at least two events for residents to engage in clean-up activities and improve water quality in the municipality.	Provide at least two events in streams, streamside parks, areas adjacent to public waterways, and / or other green infrastructure / water resources.	Public Services	At least two events in compliance with the state goals must be conducted in year which points claimed.	3	3	3	3
TOTAL					6	6	6	6

Program Assessment

Similar to Public Education and Outreach, the overall success of the Public Involvement and Participation Program will be measured through the successful implementation of the components of the program. Program assessment will be reported with each annual NPDES report discussing the activities completed in this section for the previous program year.

3.3 CONTROL MEASURE 3 - ILLICIT DISCHARGE DETECTION AND ELIMINATION

Description

This minimum control consists of developing, implementing, and enforcing a program to detect and eliminate illicit wastewater discharges or other non-stormwater discharges into the storm sewer system. KDHE requires this program to include, at a minimum:

- Developing a storm sewer system map of the permitted MS4 showing the location of all outfalls, either pipes or open channel drainage, and showing the names and locations of all streams or lakes that receive discharges from those outfalls.
- Enacting and enforcing an ordinance or resolutions to prohibit non-stormwater discharges into the storm sewer system.
- Informing public employees, businesses, and the general public of hazards associated with illegal discharges and improper disposal of waste.
- Developing and implementing a plan to detect and address prohibited non-stormwater discharges.

The implementation of BMPs for this minimum control measure must result in accumulation of a minimum of 5 total points on an annual basis for each calendar year 2021 and 2022. The Points total requirement increases to 7 points for each calendar year beginning in 2023.

Benefit

Direct discharges of waste streams can present significant localized impacts to both public health and the environment. Developing legal, technical, and educational means to eliminate illicit discharges provides direct benefits to water quality, the environment, and public health.

BMPs, Goals, and Staff

Illicit Discharge Detection and Elimination					2021	2022	2023	2024
BMP ID Number	BMP Description	Measurable Goal	Lead Staff	Schedule	5 Points Each Year		7 Points Each Year	
3.03	Develop spill response plan and, if appropriate, coordinate emergency response with other agencies or organizations.	Plan shall include explanation of appropriate spill response activities for spills associated with vehicle accidents etc.	Fire Department	Plan may be implemented in any year and points claimed for the initial implementation or each year plan remains active.	3	2	2	2
3.06	Inspect, by televising pipelines or direct visual of open channel drainage, 10% of MS4 system in a 12-month period.	Generate summary report of inspection including number of linear feet visually inspected, condition, illicit discharges and results.	Public Services and Environmental Services	Inspection process can occur in a single calendar year or over period of time into the succeeding year.	5	5	5	5

SECTION THREE

Six Minimum Control Measures

Illicit Discharge Detection and Elimination					2021	2022	2023	2024
BMP ID Number	BMP Description	Measurable Goal	Lead Staff	Schedule	5 Points Each Year		7 Points Each Year	
3.10	Inspect 15% of MS4 Stormwater System Inlets and/or outfalls to aid in identifying illicit discharges.	Generate summary report of inspection including number of inlets and/or outfalls visually inspected, condition, illicit discharges identified and eliminated.	Public Services and Environmental Services	Inspection process may be conducted over a period extending from one year to the next.	5	5	5	5
				TOTAL	13	12	12	12

Program Assessment

The overall success of the Illicit Discharge Detection and Elimination Program will be measured through the successful implementation and enforcement of the Stormwater Pollution Prevention Ordinance. Program assessment will be reported with each annual NPDES report discussing the activities completed in this section for the previous program year.

3.4 CONTROL MEASURE 4 - CONSTRUCTION SITE STORMWATER RUNOFF CONTROL

Description

This minimum control includes developing, implementing, and enforcing a program to reduce pollutants in any stormwater runoff to the MS4 for construction sites disturbing one acre or more, including areas that are less than one acre but are part of a larger common plan for development that disturbs one or more acre. KDHE requires this program to include:

- Where permittees have the authority to do so, ordinances or resolutions shall be enacted to require erosion and sediment controls, as well as sanctions to ensure compliance.
- Requirements for construction site owners or operators to implement erosion and sediment control BMPs.
- Requirements for construction site owners or operators to control wastes at the construction site that are likely to cause adverse impacts to water quality.
- Procedures for site plan review which incorporate consideration of potential water quality impacts.
- Procedures for receipt and consideration of information submitted by the public.
- Procedures for site inspection and enforcement of control measures.

The implementation of BMPs for this minimum control measure must result in accumulation of a minimum of 4 total points on an annual basis for each calendar year 2021 and 2022. The Points total requirement increases to 6 points for each calendar year beginning in 2023.

Benefit

If uncontrolled, land disturbance activities can generate significant loads of sediment which can impact both adjoining properties and downstream water bodies. Fortunately, effective controls are easy and cost-effective to implement.

BMPs, Goals, and Staff

Construction Site Stormwater Runoff Control					2021	2022	2023	2024
BMP ID Number	BMP Description	Measurable Goal	Lead Staff	Schedule	4 Points Each Year		6 Points Each Year	
4.02	Develop and adopt a design manual for erosion and sediment controls of BMPs which are required to be used on sites which will be disturbed and are either equal to or greater than one acre.	Require implementation of BMPs in compliance with the design manual on all sites which meet the disturbed area standard as specified in BMP Summary.	Public Services and Neighborhood Services	2 points for each successful year the plan remains effective.	2	2	2	2
4.03	Provide access to at least one training class for contractors, developers or others involved	Training must address all local requirements for a SWPPP, requirements for implementation of	Neighborhood Services	Points may be claimed for the year in which class was held.	3	3	3	3

SECTION THREE

Six Minimum Control Measures

Construction Site Stormwater Runoff Control					2021	2022	2023	2024
BMP ID Number	BMP Description	Measurable Goal	Lead Staff	Schedule	4 Points Each Year		6 Points Each Year	
	with land disturbance projects which provides training on SWPPP and implementation of appropriate BMPs.	BMPs and address the requirements for permits.						
4.07	Acquire or develop a software tracking system to track inspections and related tasks.	Tracking system must allow for scheduling inspections and follow-up activities such as re-inspections, mailing notices or reports, etc.	Neighborhood Services	A point can be claimed each year it is utilized.	1	1	1	1
				TOTAL	6	6	6	6

Program Assessment

The overall success of the Construction Site Stormwater Runoff Control Program will be measured through the successful implementation and enforcement of the Erosion and Sedimentation Control Ordinance. Program assessment will be reported with each annual NPDES report discussing the activities completed in this section for the previous program year.

3.5 CONTROL MEASURE 5 - POST-CONSTRUCTION STORMWATER MANAGEMENT IN NEW DEVELOPMENT AND REDEVELOPMENT

Description

This minimum control requires the development, implementation, and enforcement of a program to address post-construction stormwater runoff controls from both new development and redevelopment sites after development sites disturbing one acre or more, including projects that are less than one acre but are part of a larger common plan for development that disturbs one or more acre. KDHE requires the program to include:

- For permittees which have the authority, ordinances or resolutions to address post-construction runoff from new development and redevelopment projects to the extent allowable under state and local law.
- BMPs to prevent or minimize adverse water quality impacts.
- Strategies which include a combination of structural and/or non-structural BMPs appropriate for the municipality.
- Means to ensure adequate long-term operation and maintenance of BMPs.

The implementation of BMPs for this minimum control measure must result in accumulation of a minimum of 5 total points on an annual basis for each calendar year 2021 and 2022. The Points total requirement increases to 7 points for each calendar year beginning in 2023.

Benefit

Conversion of native landscape to developed landscape increases both the volume of stormwater runoff and pollutant loads in stormwater. The consequences can include erosion, flooding, and pollution, impacting both downstream property owners and public infrastructure. Stormwater controls included in development sites can help reduce impacts and costs to both private property owners and the public.

BMPs, Goals, and Staff

Post-Construction Stormwater Management in New Development and Redevelopment					2021	2022	2023	2024
BMP ID Number	BMP Description	Measurable Goal	Lead Staff	Schedule	5 Points Each Year		7 Points Each Year	
5.01	Develop and adopt a custom design manual for Post Construction Stormwater Management.	Custom design manual shall impose requirements to achieve at least one of the standards identified in the City's MS4 Permit.	Neighborhood Services	3 points can be claimed in subsequent years.	3	3	3	3
5.03	Develop and implement a program to ensure adequate long-term cleaning, operation and maintenance of all	Program shall be detailed in a written document and made available to all pertinent	Public Services	Initial implementation can allow points to be claimed. in that year and	3	2	2	2

SECTION THREE

Six Minimum Control Measures

Post-Construction Stormwater Management in New Development and Redevelopment					2021	2022	2023	2024
BMP ID Number	BMP Description	Measurable Goal	Lead Staff	Schedule	5 Points Each Year		7 Points Each Year	
	municipally owned or operated post-construction structural stormwater BMP facilities.	maintenance staff.		continued implementation can allow points to be claimed in subsequent years.				
5.05	Develop and implement a program for inspection of permittee owned structural BMPs which includes implementation of needed maintenance to ensure long-term operation of the BMPs.	Program shall require inspection of at least 10% of the structural BMPs on an annual basis.	Public Services	Program shall be developed and implemented within a single year.	3	2	2	2
				TOTAL	9	7	7	7

Program Assessment

The overall success of the Post-Construction Stormwater Management Program will be measured through the successful implementation and enforcement of a Post-Construction Stormwater Management Ordinance. Program assessment will be reported with each annual NPDES report discussing the activities completed in this section for the previous program year.

SECTION THREE

Six Minimum Control Measures

3.6 CONTROL MEASURE 6 - POLLUTION PREVENTION/GOOD HOUSEKEEPING FOR MUNICIPAL OPERATIONS

Description

This minimum control measure requires the development and implementation of an operation and maintenance and training program to reduce and prevent stormwater pollution from public facility operations such as park and open space maintenance, fleet and building maintenance, new construction and land disturbance, and stormwater system maintenance. The implementation of BMPs for this minimum control measure must result in accumulation of a minimum of 4 total points on an annual basis for each calendar year 2021 and 2022. The Points total requirement increases to 6 points for each calendar year beginning in 2023.

Benefit

Leading by example on public facilities and projects provides an opportunity to demonstrate and teach proper techniques to other landowners, and it is available on a routine and ongoing basis.

BMPs, Goals, and Staff

Pollution Prevention/Good Housekeeping for Municipal Operations					2021	2022	2023	2024
BMP ID Number	BMP Description	Measurable Goal	Lead Staff	Schedule	4 Points Each Year		6 Points Each Year	
6.05	Implement a program for street sweeping in which the street sweepings are collected and disposed of properly or recycled reused if possible.	All paved streets which can be swept shall be listed in the schedule for street sweeping. A log shall be maintained listing the street segments which are swept and, dates of sweeping and where the street sweepings are disposed or where the material was sent to be recycled and/or reused.	Public Services	At least 10% of the streets which are listed in the street sweeping schedule must be swept at least one a year to claim points for the year.	2	2	2	2
6.07	Implement a program to inspect stormwater inlets to identify illicit discharges and clean drop inlets of accumulated debris.	Inspect at least 10% of all inlets each year for an additional point.	Public Services	For each year which staff inspect at least 10% of all stormwater inlets at least one point may be claimed.	2	2	2	2
6.08	Develop, implement and keep updated an online storm sewer	As, needed, note revisions in annual report and	Neighborhood Services	As needed.	3	2	2	2

SECTION THREE

Six Minimum Control Measures

Pollution Prevention/Good Housekeeping for Municipal Operations					2021	2022	2023	2024
BMP ID Number	BMP Description	Measurable Goal	Lead Staff	Schedule	4 Points Each Year		6 Points Each Year	
	map accessible to the public.	update SMP.						
				TOTAL	7	6	6	6

Program Assessment

The overall success of the Pollution Prevention/Good Housekeeping Program will be measured through the successful implementation of facility SWPPPs, employee training and facility inspections conducted as part of the program. Program assessment will be reported with each annual NPDES report discussing the activities completed in this section for the previous program year.

SECTION FOUR

Total Maximum Daily Load (TMDL) Regulated Pollutants

TMDL Pollutants

TMDL regulated pollutants and impaired streams identified in the City's 2019 permit are listed below:

Impaired Stream	TMDL Regulated Pollutant		
	Nutrients	Sediment	
Walnut River	X	X	

Best Management Practices (BMPs)

All six of the minimum control measures are designed to reduce pollutants in stormwater runoff. Those BMPs especially targeting bacteria, nutrients, and sediment, the most common TMDL pollutants in the City of Arkansas City, include the following:

Bacteria

- Public Education and Outreach
- Illicit Discharge Detection and Elimination Program
- Post-Construction Runoff Controls requiring the implementation of post-construction BMPs

Nutrients

- Public Education and Outreach
- Post-Construction Runoff Controls requiring the implementation of post-construction BMPs

Sediment

- Erosion & Sediment Control at Construction Sites: Permitting and inspection program
- Post-Construction Runoff Controls requiring the implementation of post-construction BMPs

SECTION FOUR

Total Maximum Daily Load (TMDL) Regulated Pollutants

Pollutant Reduction Goals

Success in achieving reductions in bacteria, nutrients, and sediment will be assessed by directly monitoring in-stream concentrations and evaluating pollutant concentration trends across the permit period. The monitoring program is being conducted by City of Arkansas City Staff. The implementation of BMPs for this minimum control measure must result in accumulation of a minimum of 4 total points on an annual basis for each calendar year 2021 and 2022. The Points total requirement increases to 6 points for each calendar year beginning in 2023.

BMPs, Goals, and Staff

TMDL BMPs and Surface Water Monitoring					2021	2022	2023	2024
BMP ID Number	BMP Description	Measurable Goal	Lead Staff	Schedule	4 Points Each Year	6 Points Each Year	6 Points Each Year	6 Points Each Year
TMDL.01	Install pet waste stations which include a glove/bag dispenser with signage and waste can to encourage pet waste disposal at either parks, trails, rest areas or other public lands owned by the permittee.	At least one pet waste station shall be installed at the selected park, trail, rest area or other public land. The station (s) shall include signage which encourages proper pet waste disposal/cleanup and a waste can.	Public Services	1 point for year in which measurable goal requirements are enacted and thereafter the pet waste stations remain in use.	1	1	1	1
TMDL.05	Develop a pet waste brochure or flyer document to educate the public about animal waste contamination of stormwater. The document encourages pet owners to pick up their pet's waste. Alternately, post the document on social media or the municipal website.	Documents posted to social media or the website shall have the page copied and printed to retain on file.	Public Information Officer	Documents posted on website shall be posted for at least six months in the year.	1	1	1	1
TMDL.06	Post "Only Rain Down the Drain" on City's Website.	This information and copies of shall be printed to retain on file.	Public Information Officer	Documents posted on municipal website for a minimum of three months in the year.	2	2	2	2
TMDL.12	Construct a stream bank stabilization project.	Install a minimum of 100 feet of bank stabilization at a site (s) with a history of erosion.	Public Services	3 Points may be claimed for first year and 2 points for each subsequent	3	2	2	2

SECTION FOUR

Total Maximum Daily Load (TMDL) Regulated Pollutants

TMDL BMPs and Surface Water Monitoring					2021	2022	2023	2024
BMP ID Number	BMP Description	Measurable Goal	Lead Staff	Schedule	4 Points Each Year		6 Points Each Year	
				year.				
				TOTAL	7	6	6	6

Program Assessment

The overall success of the TMDL BMPs and Surface Water Monitoring Program will be measured through the successful collection of stormwater samples collected as part of the program. Program assessment will be reported with each annual NPDES report discussing the activities completed in this section for the previous program year

Mapping

A map of the permit area is included as Attachment 1.

An in-stream monitoring program targeting impaired streams and TMDL pollutants is undertaken by the City of Arkansas City as well as the KDHE.

The monitoring program will include:

1. Two sampling sites were identified where discrete samples will be collected with passive samplers. Sample locations are located where streams generally enter and leave jurisdictional boundaries in impaired watersheds.
2. Targeted analyses include nutrients, suspended sediment, and *Escherichia coli* bacteria.
3. Four storm event samples will be collected at each site annually.
4. Samples will be collected from storm events of at least 0.25 inches in 24-hours and samples will be collected during the rising limb of the storm events.
5. Data will be compiled and reviewed on a routine basis and an annual summary of results provided.

A map of TMDL monitoring locations is included as Attachment 2.

Permit Compliance Schedule

Part IV of the 2019 permit includes the following compliance schedule requirements:

- **Year 2019:** Complete inventory and maps of outfalls, streams, and lakes in targeted areas; drainage basins for structural and non-structural BMPs; Select and initiate or continue effective plans for source control programs targeted to TMDL pollutants.
- **February 28, 2021:** Submit a copy of this updated SMP to KDHE.
- **Year 2021:** Continue source control programs and monitoring program.
- **Year 2022:** Continue source control programs and monitoring program.
- **Year 2023:** Continue source control programs and monitoring program.
- **Year 2024:** Continue source control programs and monitoring program.

Annual Reporting

A calendar year annual report will be submitted to KDHE by February 28 of each year. The report will cover activities conducted during the prior calendar year and will include the following:

- Summary of compliance activities associated with the permit
- A review of the appropriateness of BMPs and progress towards achieving water quality goals
- Results of information collected and analyzed, if any, including monitoring data
- Summary and status of stormwater activities conducted during the previous year
- Summary of stormwater activities scheduled to take place during next reporting cycle (including schedule)
- Map showing changes in jurisdictional permit area, if appropriate
- Description of significant changes in any BMPs, including the six minimum control measures
- Copies of updated ordinances or resolutions associated with this SMP or the six minimum control measures
- Updated list of other parties which will be responsible for implementing program areas of this SMP, as required

SECTION SEVEN

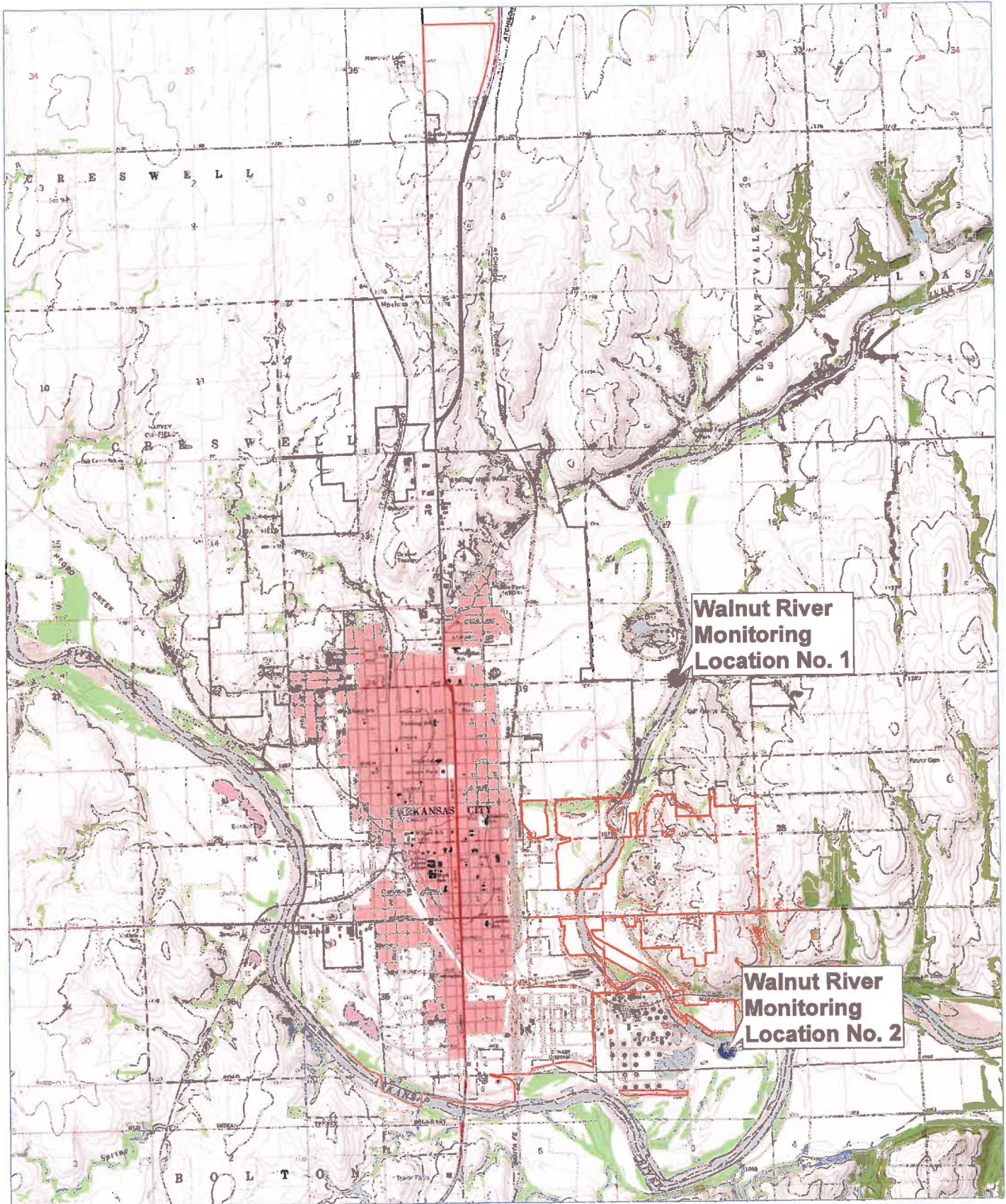
Modifications to BMPs Or This Plan

This SMP will be evaluated annually and modifications to the Plan, if any, will be submitted with the annual report.

Minor modifications to BMPs listed in this plan, if needed to meet program objectives, will be made within 60 days determined by the permittee or written notification from KDHE.

Major modifications to BMPs listed in this plan, if needed to meet program objectives, will be proposed in a written plan to KDHE, within 60 days determined by the permittee or written notification from KDHE.

Attachment 1 - Map of Permitted Area



MS4 Sample Locations Arkansas City, KS

Legend

- Monitoring Location
- Jurisdictional Permit Area



Produced by the City of Arkansas City GIS using the best available data to date. The City makes no warranty or representation, expressed or implied, with respect to the data displayed.
2/12/2021

Attachment 2 - TMDL Monitoring Locations

TMDL Surface Water Monitoring Locations

Local Site Name	Walnut River Monitoring Location No. 1	Walnut River Monitoring Location No. 2
Local Site Identifier	No. 1	No. 2
Sample Location Description	US166 Bridge over Walnut River	South M Street Boat Ramp Walnut River
KDHE EDMR Code	WAL002A5	WAL002B6
Lat. & Lon. Date Decimal-Degree Format		
Latitude	37.056260 °	37.043174 °
Longitude	-97.024948 °	-97.006907 °
Years monitoring will be conducted	2019 thru 2024	2019 thru 2024