

Webmap Tutorial

Last updated: November 17, 2015

To Use the Web map:

Open internet browser

a. Type in the URL address:

- i. <http://arkcity.maps.arcgis.com/apps/webappviewer/index.html?id=8f8e2f7c4a37484fa073544326110b9a>

ii. Save in Favorites tab

b. Note: This should work in all the popular web browsers including Internet Explorer, Firefox, Chrome and Safari. It will also work on mobile devices such as your iPhone or Android phone or your tablet.

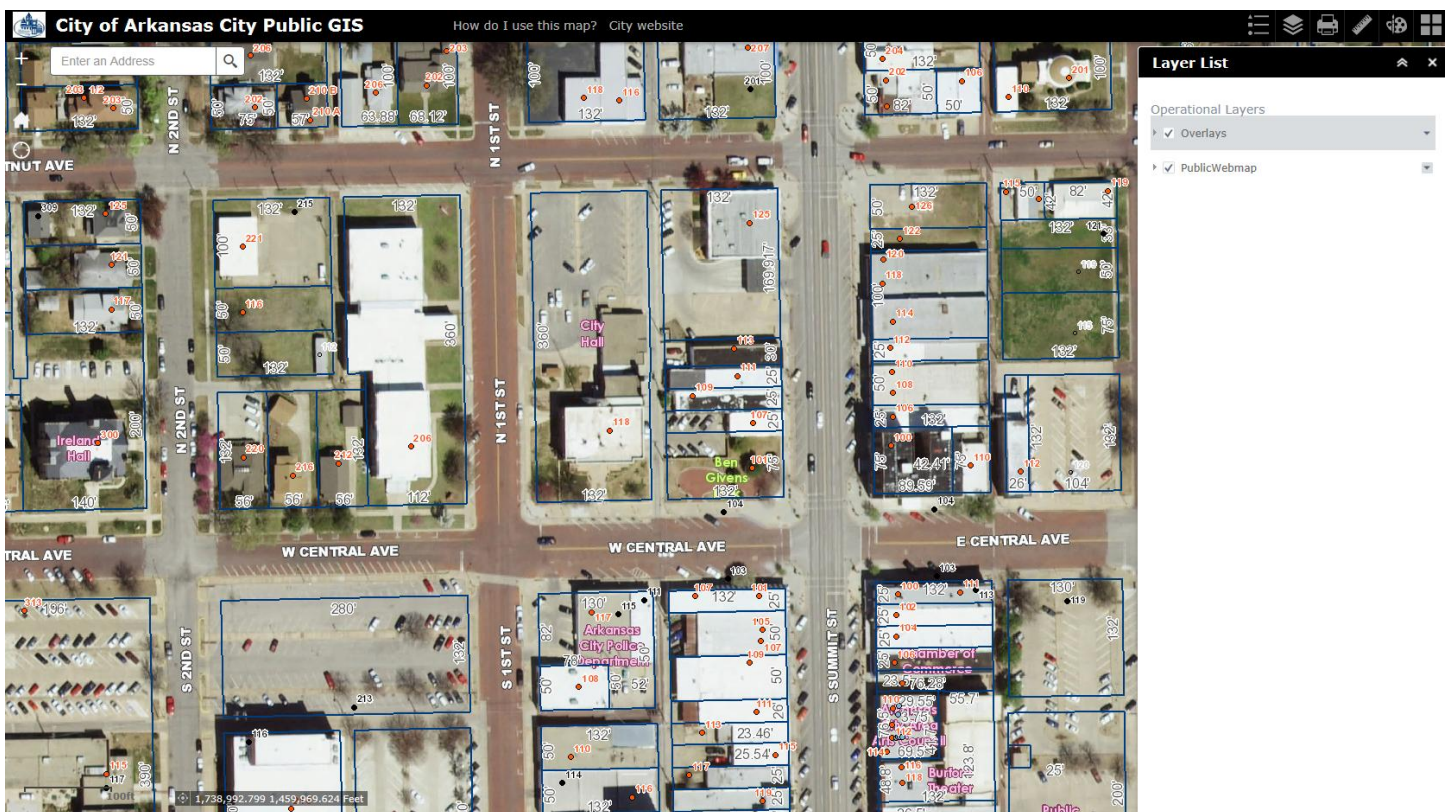
c. If at any point the map has errors, the first step is to clear your internet browser cache

i. Open Internet browser

1. <http://www.refreshyourcache.com>

2. Contact Josh White at 620-441-4420 if your still having problems

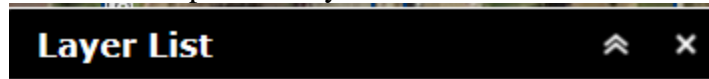
d. When the Web Map opens, it will look similar to the picture below



In order to turn layers off you will need to activate the Layer list in the top toolbar. This is the second icon at the top left of the screen.

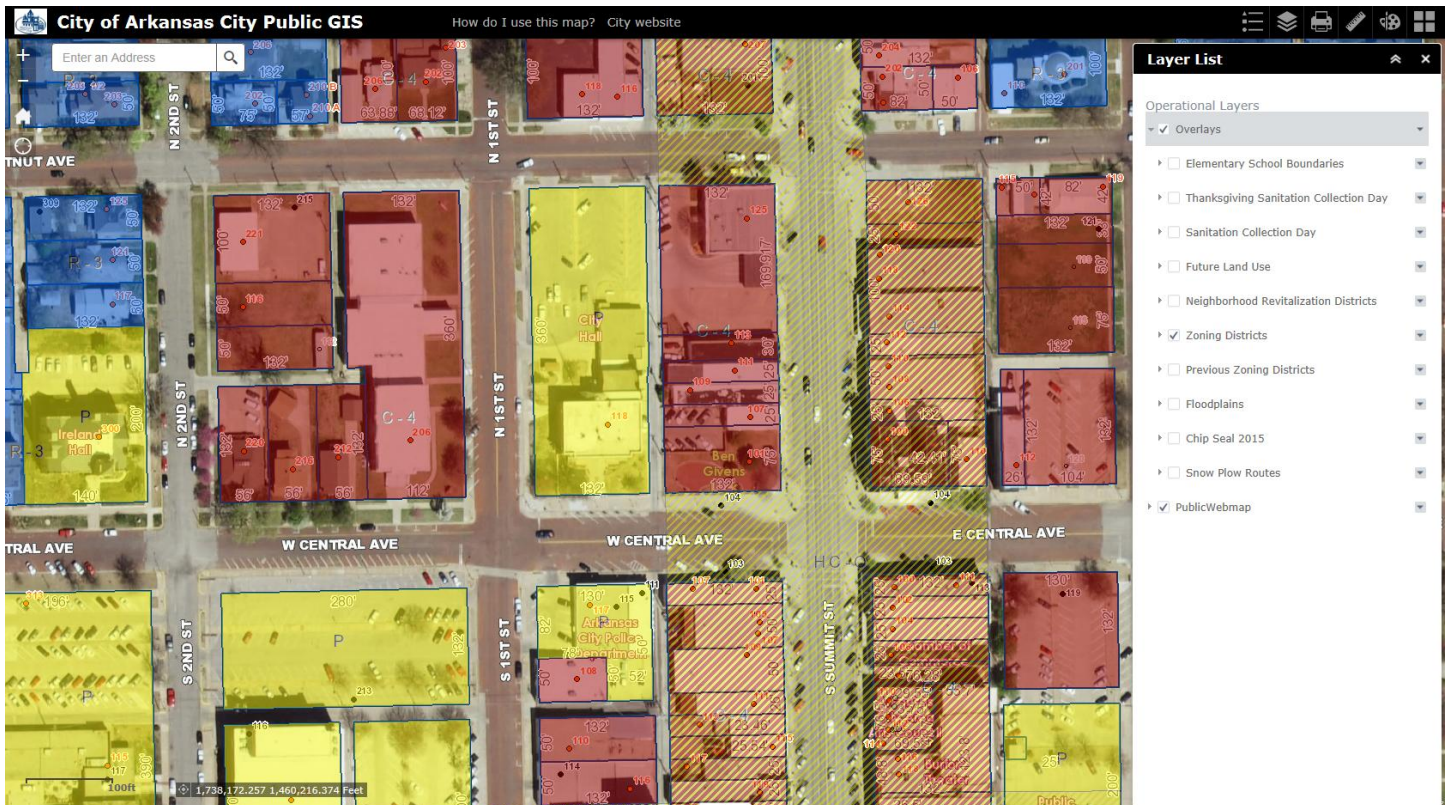


Clicking this icon will open the Layer list and will look something like this:



There are a number of types of layers that can be turned off and on as appropriate. Click on the arrow (▾) for further legend details. Whichever layer is clicked on, it will show up on the map. For example if you want to turn on the Zoning Districts you would click the arrow (▾) next to Overlays and check Zoning Districts:

And now the Zoning Districts should be displayed:



The Overlays layer contains other layers that are overlaid with transparency on the map. This includes layers such as zoning districts, floodplains, sanitation pickup days and similar layers. Clicking the various checkboxes there will turn them off and on.

Basic Functionality:

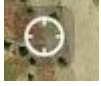
Panning: Panning is enabled by default. In order to pan around the map, simply click your mouse and hold and drag to the appropriate place.

Zooming: There are a couple of ways to zoom in and out. There is a toolbar at the upper left that you can click to zoom in or out.



You can also use the scroll wheel on your mouse if you have one to zoom in and out. The map has set zoom levels that it will automatically go to.

Locate: If you are using a GPS enabled device such as a tablet or a mobile phone, you can click on the locate



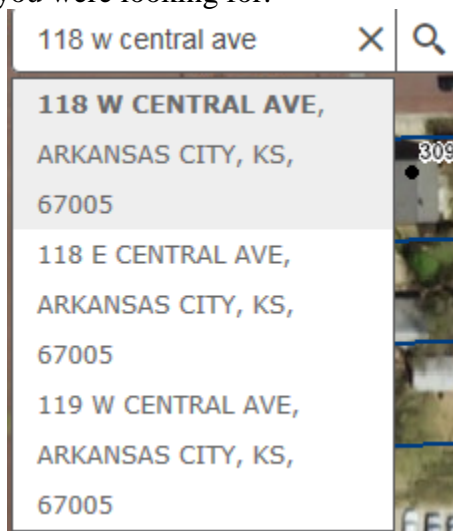
button which is located in the upper left corner to pan to your current location.

To Find an Address: There is a search box that you can type in an address that is always visible in the upper left corner of the map that you can simply enter the desired address.



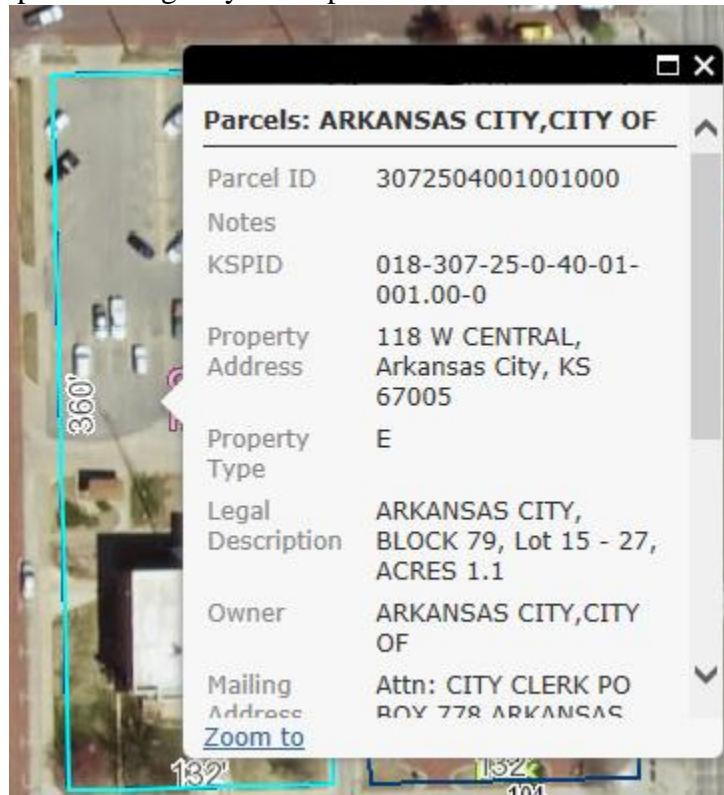
Enter an address in the box.

- a. This box is not terribly picky about how you enter an address but it must include a number, direction if the street has one and at least the street name. i.e. "118 W central" is sufficient for locating 118 W CENTRAL AVE but it can be entered either way. On the other hand "central" will produce no results and "118" will produce no results.
- b. Also, if you don't know the exact address you can enter an approximate address to find the general area. If for instance you couldn't remember if city hall was 116 or 118 W Central and you typed in 116 W Central, the tool would still get you to right place as it works off of address ranges even though 116 doesn't actually exist. You may get more than one result; just click the one that is closest to what you were looking for.

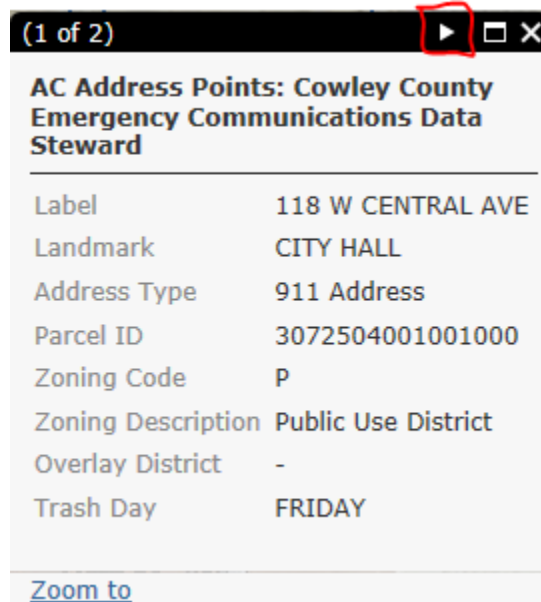


- c. Click the  to dismiss the results.

To identify an item: In this new webmap, this is no longer a separate tool. Identify is enabled by default. If you click on identifiable feature, a popup will be displayed that will show you the attribute information for the feature. For example, clicking on a parcel will give you the parcel information:



You can scroll down using the scroll bar on the right of the box if it doesn't all fit in the box. There are some cases where more than one result may come up as well such as if you click directly on an address point, both the parcel ownership information would come up and the address point information would come up. If that is the case you would simply click the right hand arrow at the top of the pop up that looks similar to this:

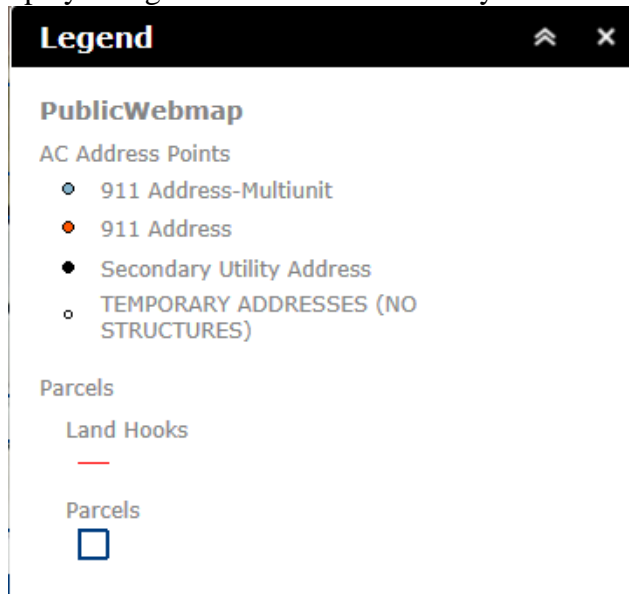


Other Tools: The other tools are functional and provide additional functionality.



Moving from left to right:

Legend: Clicking on this tool displays a legend of all of the active layers.



Layer List: This is similar to the Table of Contents from the old map, this was discussed previously and allows the user to turn layers on and off.

Print: This tool will take a snapshot of the map and create a PDF that can be printed. Pop-ups must be enabled in your browser for this to work.

Measuring tool: Measure distances, area and find coordinates

Palette tool: Draw markups on the map that can then be printed using the print tool.

Basemap tool: Changes the basemap used in the map. You can choose either the default aerial imagery or a street map.

If you have questions about any of these additional tools, see Josh in the Public Works office, email jwhite@arkansascityks.gov or call our office 441-4420. .